

# VIVA

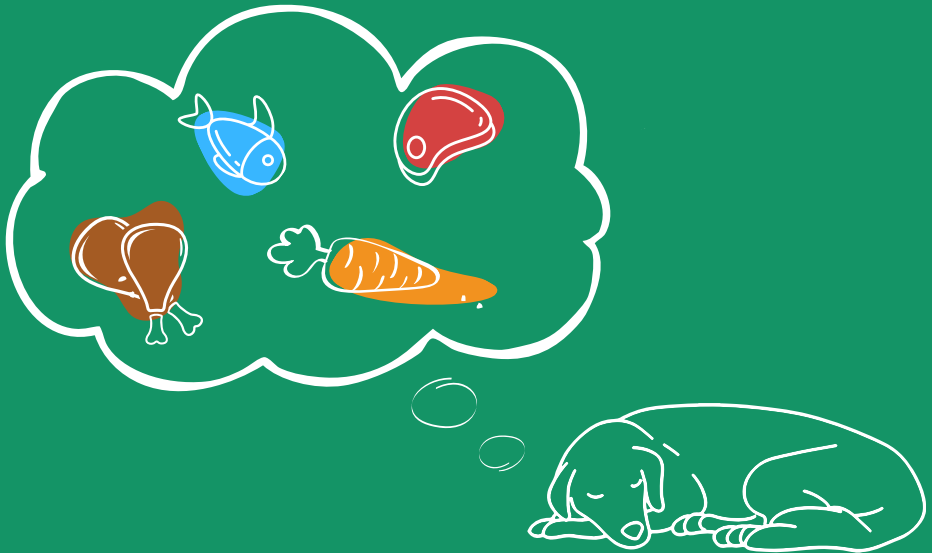
**you're about to try  
the best food ever.**

Get 25% OFF with your vet's code

**DRYING**

valid for your first order with us at [www.vivarawpets.com](http://www.vivarawpets.com)

# get to know us





## **100% human grade ingredients**

There's nothing in our food that we wouldn't put on our own tables. We source from the same US family farms that stock your local restaurants and stores.



## **humanely raised, hormone & antibiotic-free**

We believe the saying: you get what you put in. That's why only the good stuff goes into our food — starting with the way our animals are raised & cared for.



## **handcrafted in USDA kitchens**

All our food is lovingly mixed and packed in a USDA facility. After all, we think it's a big deal you trust us to feed your fur-baby!



# for dogs

## 5 single protein recipes



Chicken



Turkey



Beef



Duck



Rabbit

## what makes Viva different

- balanced with 100% organic whole food ingredients
- we offer a chunky texture to show our lean, quality cuts
- never any starchy fillers

*Formulated to meet the AAFCO Dog Food Nutrient Profiles for Adult Maintenance*



# what's in our dog recipes?

**90%** **humanely raised meat**

lean muscle cuts, heart, gizzard, liver, kidney, bone



**8%** **organic fruits & veggies**

organic carrots, organic cranberries, organic broccoli, organic green beans,



**2%** **natural supplements**

organic flaxseed oil, organic ginger, organic icelandic kelp, cod liver oil powder, organic wheatgrass, natural vitamin E, organic shiitake mushrooms, green mussels





## 5 single protein recipes



Chicken



Turkey



Beef



Duck



Rabbit

## what makes Viva different

- supplemented with whole food ingredients for optimal bioavailability
- 97% meat-based ingredients for species appropriate nutrition
- no fruits, veggies, or other fillers

*Formulated to meet the AAFCO Cat Food Nutrient Profiles for All Life Stages*

# what's in our cat recipes?

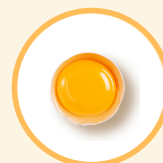
**97%** **humanely raised meat**

lean muscle cuts, heart, gizzard, liver, kidney, bone



**3%** **natural supplements**

organic psyllium husk, blue mussels, fish oil powder, organic egg yolk, taurine, organic icelandic kelp, cod liver oil powder, nutritional yeast, natural vitamin E, oysters, manganese proteinate





# for puppies

**Ingredients:** turkey with ground bone, beef heart, turkey heart, beef meat, beef liver, beef kidney, organic carrots, organic cranberries, organic broccoli, organic green beans, organic apple fiber, blue mussels, oysters, fish oil powder, beta glucans, organic ground ginger, organic icelandic kelp, cod liver oil powder, natural vitamin E, organic shiitake mushrooms

## what makes our puppy recipe different?



**immune health**

beta glucans boost and activate the immune system



**large breed friendly**

optimal calcium phosphorus ratios for strong bones



**gut health**

prebiotic fibers set the foundation for a healthy microbiome



**brain development**

enhanced EPA & DHA support cognitive health

*Formulated to meet the AAFCO Dog Food Nutrient Profiles for Growth & Reproduction, including growth of large breed dogs (70 lbs or more as an adult)*



## pure recipes

### 5 single protein recipes



Chicken



Turkey



Beef



Duck



Rabbit

### what makes Viva different

- perfect for pets with allergies or food sensitivities
- nutrient-dense cuts formulated for prey model ratios
- use as a base mix to customize for your pet's individual needs

*Not intended as a complete and balanced diet, suitable for intermittent feeding for cats & dogs.*

# how much to feed?

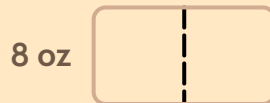
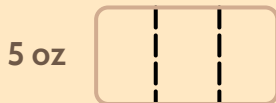
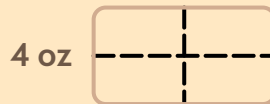
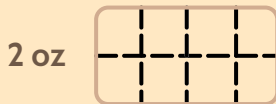
## Take our quiz!

Get recommendations based on your pet's age, weight & activity level



## Portion sizes

Thaw for 24 hours in refrigerator prior to feeding. Feed 2 meals / day for adult pets or 3 meals / day for puppies & kittens that are 6 months or younger. See common portion sizes below:



## making the switch

Start the transition with a protein your pet is familiar with! Slowly increase the portion of Viva according to the schedule below:



**Day 1-3**

25% Viva



**Day 4-6**

50% Viva



**Day 7-9**

75% Viva



**Day 10**

100% Viva

Some pets may go through a "detox" period where they experience loose stools and shedding as their body & gut microbiome adapts to raw. This is normal and they should have small, firm bowel movements within 7-10 days! Use canned pumpkin (nothing added) or slippery elm bark to help with GI upset during the transition.

Got a picky eater? Here's a few helpful tips!

- Start with even smaller amounts (5-10%) of Viva
- Mix in a tasty topper like bone broth or nutritional yeast
- Gently sear on low heat for 3-5 min to release aromas

# try our food worry-free



## **clean bowl guarantee**

If your pet doesn't eat every last bite of their first order, we'll refund it!



## **shipping guarantee**

We go above and beyond to ensure your order arrives in perfect condition, but if there are ever carrier issues, reach out and we'll take care of it!



[info@vivarawpets.com](mailto:info@vivarawpets.com)



[www.vivarawpets.com](http://www.vivarawpets.com)



(919) 371-8882